

Karima Smith - Pollinator Project Officer

Hampshire County Council's Countryside Service

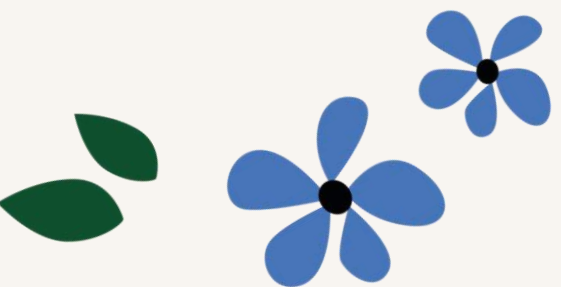


Hampshire
County Council

Countryside

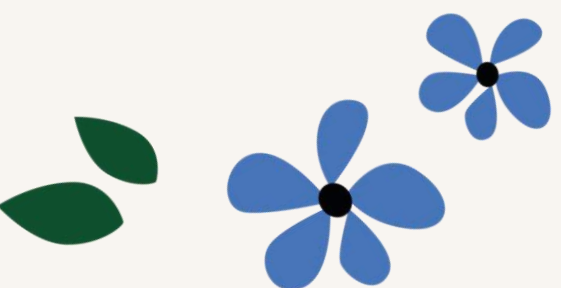
HAMPSHIRE COUNTRYSIDE SERVICE

- Country Parks
- Sites
- Access (rights of way)
- Tree Team
- Nature Recovery Team
- Partnerships



HAMPSHIRE COUNTRYSIDE SERVICE

We are responsible for:



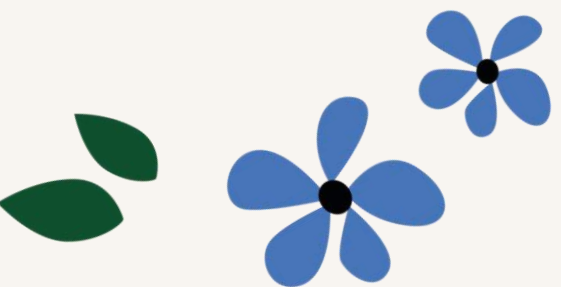
NATURE RECOVERY

Nature Recovery prioritises the connection of vast land areas through Nature Recovery Network (NRN) initiatives.

It is backed by the government's new Environment Act 2021 and the 25-Year Environment Plan and aims to bring different partners, legislation, and funding together to give land across the country the best chance to recover.

The NRN is aimed to deal with three of the biggest challenges we face: biodiversity loss, climate change and wellbeing.

Engaging people is at the heart of the Nature Recovery principle.



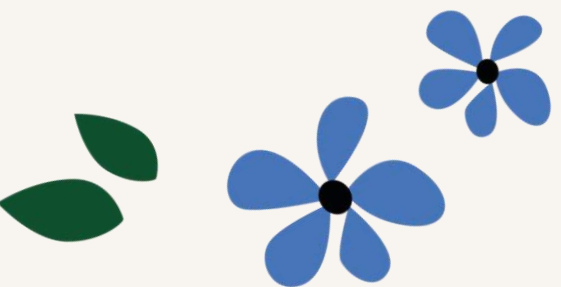
NATURE RECOVERY

Nature Recovery

is about building resilient landscapes for the future through natural restoration. It looks at where healthy wildlife habitats already exist, how they can be improved and made bigger and how they can be connected

Nature-based Solutions

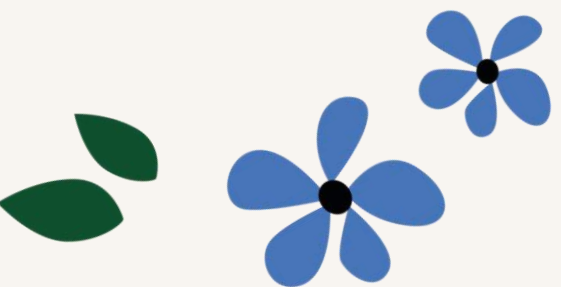
These are things that the environment can provide as part of the natural functions and processes that take place in a healthy habitat.



POLLINATOR DELIVERY PLAN



- Manage our land for the maximum benefit of Pollinators
- Influence and support use of pollinator friendly land management amongst other landowners
- Public engagement to highlight biological and economic importance of pollinators
- Encourage research and evidence collecting





POLLINATOR PLEDGE

www.hants.gov.uk/pollinatorpledge

We have two webpages aimed at the public. The aim is to raise awareness of the biological and economic importance of pollinators to the people of Hampshire. There is also information to help support people in making a pollinator pledge at home.

#pollinatorpledge


What is a Pollinator Pledge?

A Pollinator Pledge is a promise to help our pollinators. This could be by making a bug hotel or by creating a wildflower meadow. One small change can have a big impact. So, join us and make your own Pollinator Pledge.

Your Pollinator Pledge

Whether it's by making space for nature or learning more about pollinators, we can all do something to help.

[Information for individuals](#)




Parish Pollinator Pledge

For local councils and community groups.

Local communities can pledge to help enhance their local environment and raise awareness of pollinators' importance.

[Information for community groups](#)



Why are pollinators in decline?

There are a number of threats to pollinators.

- [+ Habitat loss and fragmentation](#)
- [+ Managing habitats](#)

What we are doing to help

We are delivering on our Pollinator Pledge by:



PARISH POLLINATOR PLEDGE



We are encouraging parish and town councils as well as community groups across Hampshire to make a Pollinator Pledge too.

By working together across all the parishes in Hampshire, we can have a bigger, better impact for wildlife.



PARISH POLLINATOR PLEDGE

[www.hants.gov.uk/
parishpollinatorpledge](http://www.hants.gov.uk/parishpollinatorpledge)

Countryside

[Visit](#) - [About us](#) - [Our work](#) - [Get involved](#) - [Get in touch](#) - [Blog](#) -

Parish Pollinator Pledge

We want Hampshire to be a place for pollinators to thrive. So, we're looking for local councils and community groups to pledge to improve their local environment for pollinators. By taking action for pollinators, no matter how small, you can make an impact and help to support our local countryside.

What is a Parish Pollinator Pledge?

Making a Pollinator Pledge means promising to help our pollinators. At Hampshire Countryside Service, we've made a Pollinator Pledge to manage our over 3,500 hectares of land for the maximum benefit of pollinators. This is a key part of our [nature recovery](#) plan.

We want to encourage parish and town councils as well as community groups across Hampshire to make a Pollinator Pledge too. By working together across all the parishes in Hampshire, we can have a bigger, better impact for wildlife.

Our resources are free, and we have funding available. The Parish Pollinator Pledge is completely flexible; you can do as little or as much as you are able to and there are no set procedures to follow. We are here to support you as and when you need.



PARISH POLLINATOR NETWORK

Current members of the Parish Pollinator Network

[Alton Climate Action Network](#)

[Alton Town Council](#)

[Buriton Parish Council & the Buriton Environmental Association](#)

[Colden Common Allotments](#)

[East Woodhay Parish Council](#)

[Federation of Bursledon CofE infant and Bursledon CA junior schools](#)

[Hook Beelines Project](#)

[Hook Infant School](#)

[Liss Parish Council](#)

[Newman Collard Playing Fields Trust](#)

[Selbourne Landscape Partnership](#)

[Test Valley Borough Council](#)

[Valley Park Parish Council](#)

[Woodlands WEB: wildlife-ecosystem-biodiversitys](#)

[Yateley Climate Action Network](#)

[The Yateley Society](#)

If there's a group you would like to join, share ideas with, or get advice from, contact us and we'll put you in touch.

By adding your organisation's name you can demonstrate your commitment to helping your local environment. You will also inspire others to take action for pollinators and help increase the opportunities for working together!



COUNTRYSIDE SERVICE SUCCESSES

- Duke of Burgundy butterfly projects.
- Saving England's Lowland Juniper projects.
- Staff from a variety of different job roles across the service volunteering as Pollinator Contacts.
- No Mow May being supported at all our country parks
- Family events, interpretation and trails to help raise awareness of pollinators



45

1 1

Like

Comment

Most relevant



Top fan

Diane Wallace

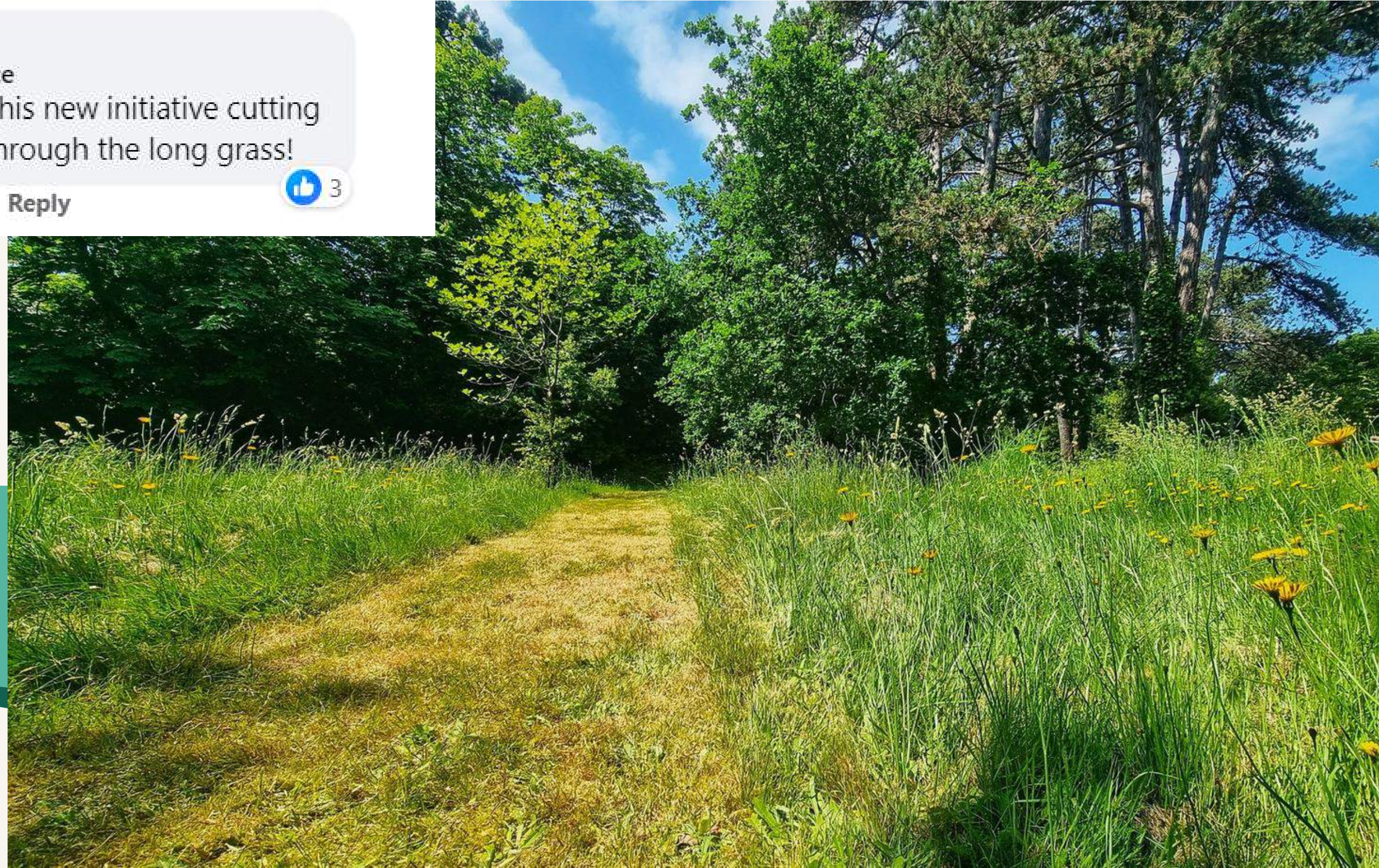
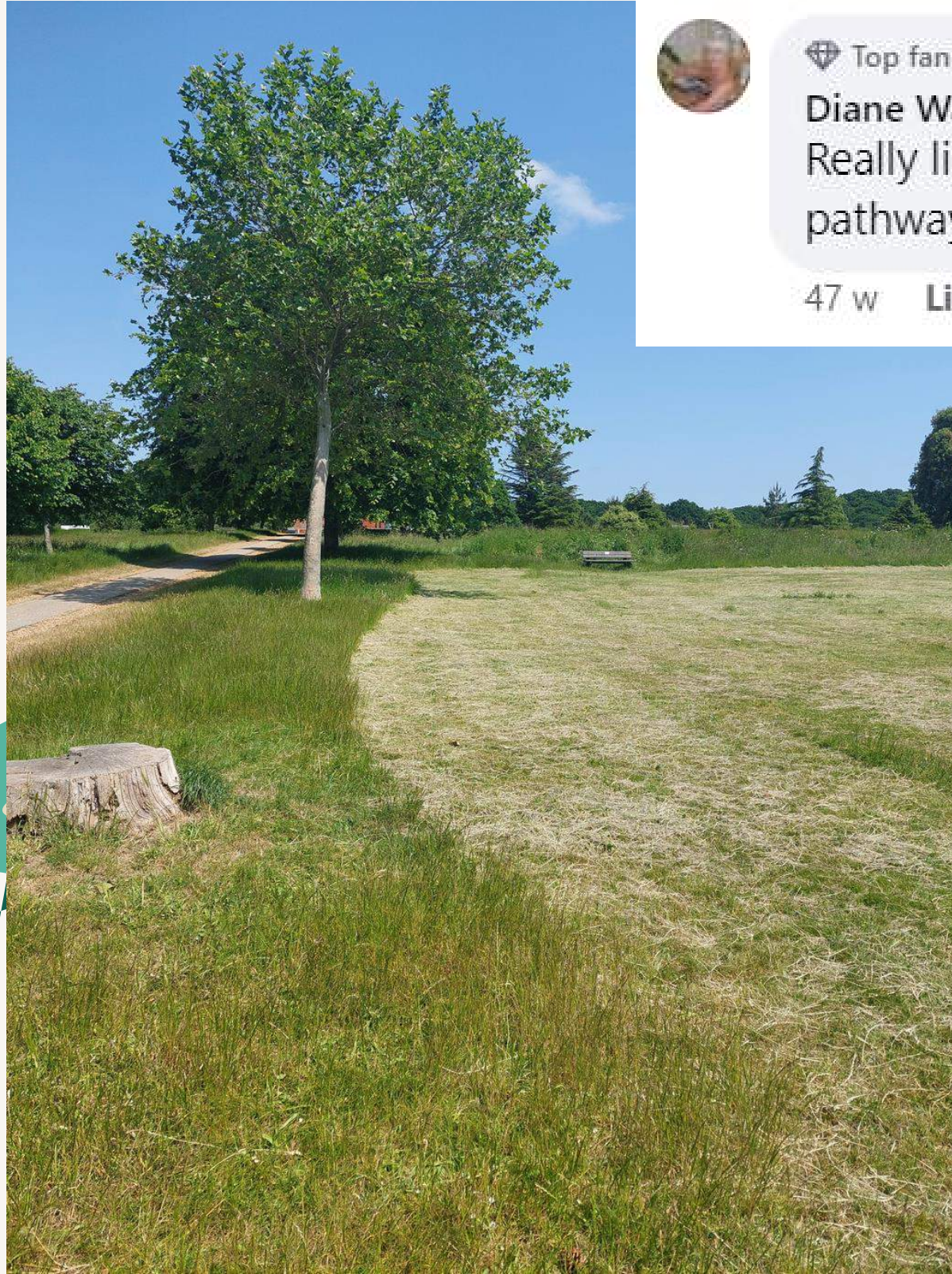
Really like this new initiative cutting pathways through the long grass!


47 w Like Reply



3

NO MOW MAY



The illustration depicts a lush garden scene. In the foreground, there is a patch of green grass with several flowers: a white daisy with a yellow center, a yellow daisy, a cluster of yellow flowers, a white daisy, and a purple flower. A bumblebee is flying near the purple flower. In the background, there are tall green stems with spiky seed heads and a large yellow flower with many thin petals. The overall style is clean and modern with a focus on natural elements.

Let your green space grow

for #NoMowMay



Leaving patches of grassy areas to grow longer this summer allows native flowers to bloom for bees and butterflies and provides shelter for small mammals.

Join the No Mow May movement at plantlife.org.uk/nomowmay

PARISH POLLINATOR SUCCESSES

Woodlands WEB Wildlife – Ecosystem - Biodiversity

New community group set up in Woodlands nr West Meon.

Buriton Parish Council

B-earth Day event, now in its third year.

Monthly wildlife events & activities.

Gardening for wildlife



PARISH POLLINATOR SUCCESSES

Friends of Blacknest Fields (Binstead Parish Council)
Volunteer day to sow a grass field with yellow rattle seed “the meadow maker”.



PeCAN

A Fruit Tree in Every Garden came to a successful end with 1000 trees and 2.7km of hedging planted this season.

WORKING WITH CLANFIELD PARISH COUNCIL



Think before you pull this plant!

- Ragwort in pasture is only a serious threat to grazing animals if it is cut, dried and fed as hay. Animals generally avoid eating it because it tastes unpleasant.
- Ragwort is an important host to many pollinating insects like bees, butterflies, moths, beetles, and hoverflies.
- Lose the Ragwort and you will lose these hugely beneficial insects.

Illustrations clockwise from top left (not to scale):
Small Copper
Cinnabar Moth (adult)
White-Tailed Bumblebee
Small Skipper
Cinnabar Moth (larva)
Antler Moth
Red Soldier Beetle
Thick-legged Flower Beetle
Marmalade Hoverfly
Small Tortoiseshell
Common Blue

Published by
Butterfly Conservation -
West Midlands

Poster artwork & design:
Sarah Jameson



WEST MIDLANDS
BUTTERFLY CONSERVATION

Ragwort

Ragwort provides a home for a large number of insects. Thirty species rely on the plant as their sole food source and 10 of these are so rare that they are included on international red lists.



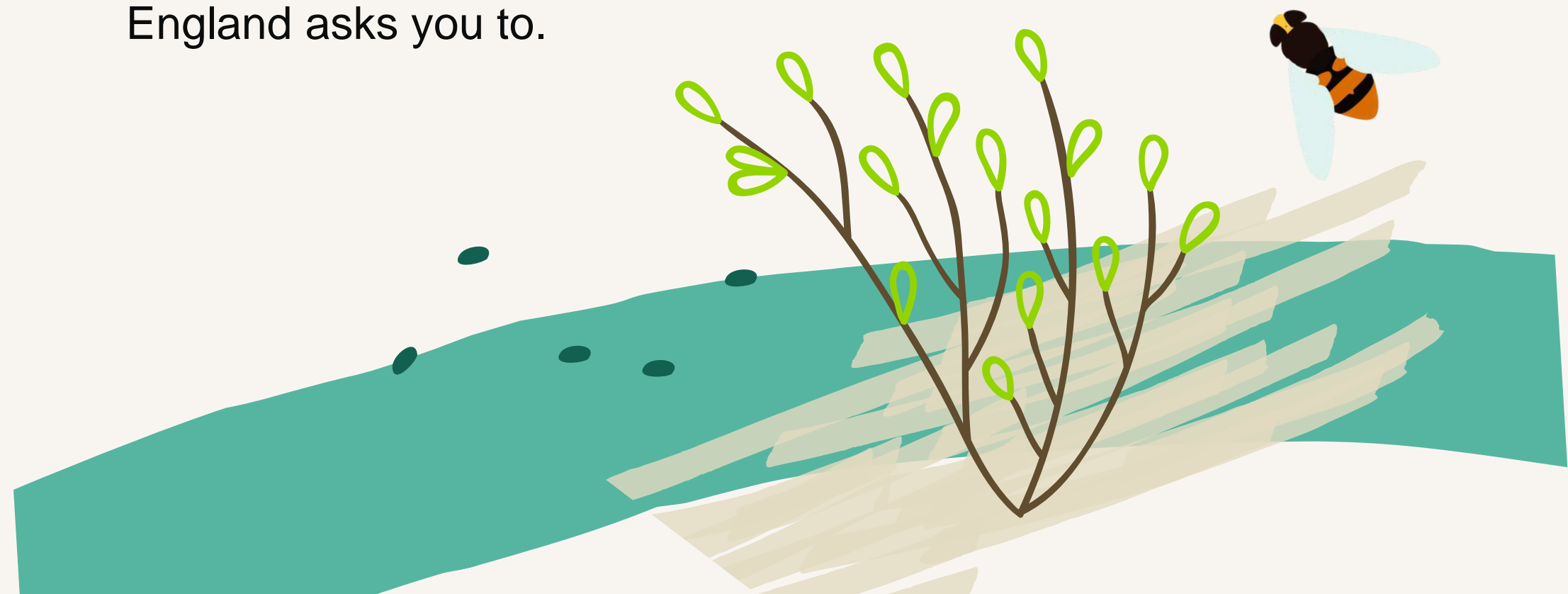
www.westmidlandsbutterflyconservation.wordpress.com

Harmful weeds, such as ragwort, are native to the UK and contribute to biodiversity. Some harmful weeds are poisonous to animals, or can damage crops if they spread.

You can have harmful weeds growing on your land, but you should stop them spreading on to agricultural land that's used:

- for grazing
- to produce forage, like silage and hay
- to grow crops

You may have to pay back costs associated with clearing the weeds if you do not clear them yourself when Natural England asks you to.



QUESTIONS?

